

This year we see the NZSDA Annual Conference, AGM and NZ Sign and Display Awards held in The Garden City of Christchurch.

Christchurch embraces a lifestyle of dynamic business and education, rich art and culture, exciting cuisines and world-class wines. No matter what you're looking for, you can find it in this exciting city.

Hotel Grand Chancellor is an exceptional venue for all of the 2010 conference activities. This is the tallest hotel in Christchurch. It is fully air-conditioned and features quiet, environmentally-friendly rooms that overlook the Canterbury Plains and the snow-capped Southern Alps to the west and the Pacific Ocean to the east. The hotel features a lobby that includes a 24-hour reception desk with a 24-hour check-out service, a hotel safe and currency exchange facilities. There is lift access, a bar, a restaurant and conference facilities.

Centrally located with shops, restaurants and bars at its very door step enables you to enjoy the best Christchurch has to offer.

This years conference theme is BRING. It is about bringing together the New Zealand sign industry to share our knowledge, ideas and our passion for what we do.

For the very first time we have a Vehicle Wrapping competition where sign writers can put their skills against their peers in this growing area of vehicle signage.

With a major prize of 5 nights in Fiji at the Intercontinental Resort and 3 nights at the Hilton for the winning team, this is going to be an exciting competition to be at.

One of the largest trade shows dedicated to the Sign and Printing industries will be taking place at this year's conference. With new technologies, products and ways of doing things this will be an event you do not want to miss, giving you the time and place to talk with some of our industries largest suppliers and manufacturers.

There is a range of work shops to take part in with Marcus Adler speaking on Colour Management, Wayne Campbell on Working Smarter Not Harder and Ian Shepherd on Training Initiatives and a forum on LED lighting.

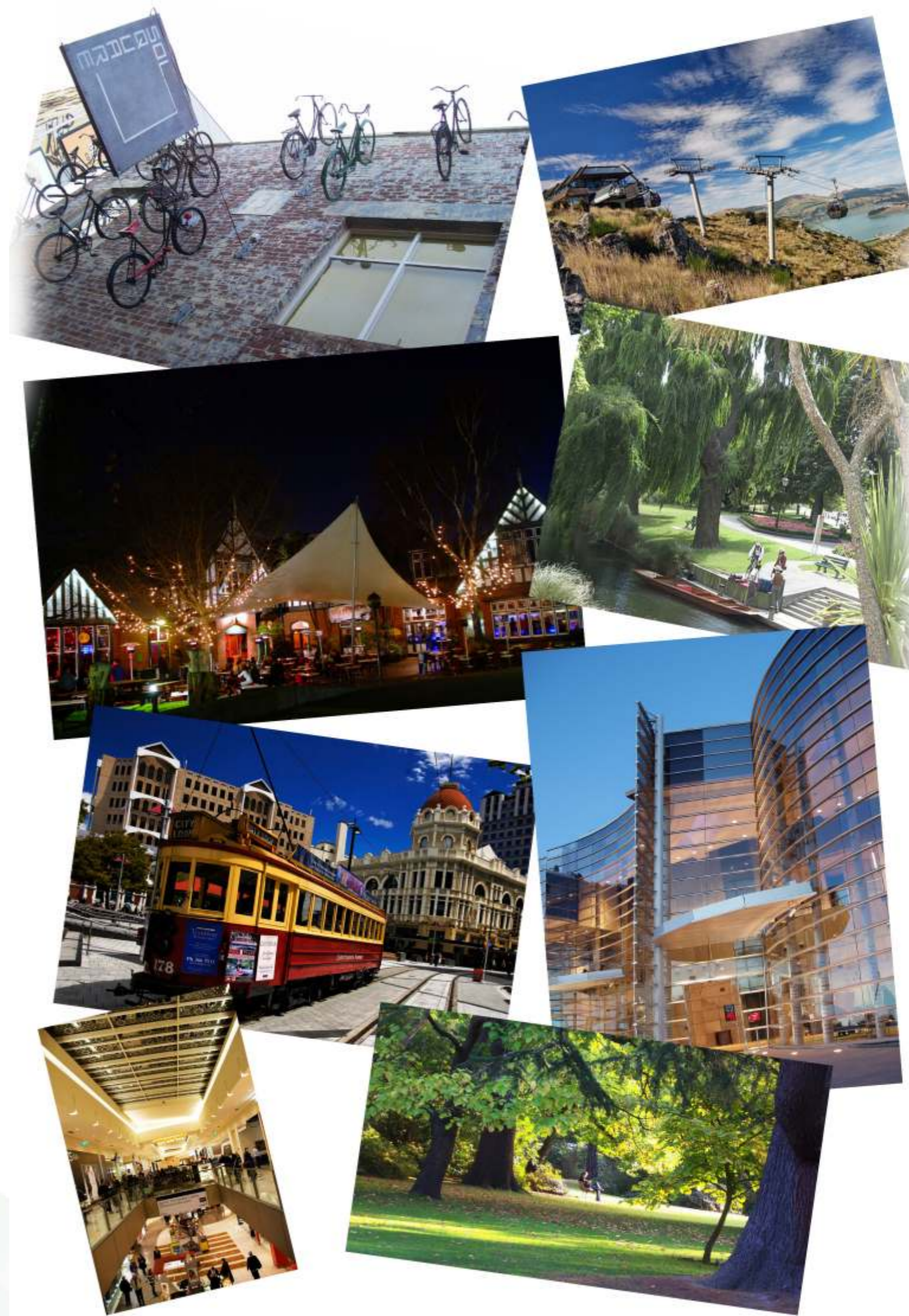
An exciting Partners Program has been put together giving you an opportunity to explore Christchurch in a most relaxing way.

Friday night sees a Mystery Gathering at which fancy dress is a must, so which Super Hero will you be? This night promises to be one you will not want to miss, with an opportunity to see a part of Christchurch very few know is here.

Saturday gives you time to take part in a long standing conference tradition of Pool or Golf. But if Pool and Golf are not your thing the trade stands will be open all day giving you time you may need with your suppliers.

Christchurch has a wide range of things to do so why not visit the hotel concierge and see what is on offer or visit www.christchurchnz.com to plan your own.

So think about what you can BRING to this year's conference, but most importantly Bring Yourself!



Delegates & Partners Programme

Wednesday 14/4
9.00am to 5.00pm
5.30pm to 9.00pm

Executive Meeting - Christchurch Room
Registration Mix 'n' Mingle (Chancellor 3)

Thursday 15/4
8.30am to 9.30am
9.45am to 12 noon
12 noon to 1.00pm
1.00pm to 5.00pm

President's Breakfast (Chancellor 3 & 4)
AGM (Chancellor 2)
Lunch - Chancellor (3 & 4)
Partners Programme Option – Pam Scott, Dress for your Personality. Colour Consultant, Wardrobe Planning, Wine and Cheese 1.30 – 4.30pm (Auckland Room)
Colour Management - Chancellor 2
Marcus Adler
Managing Director, Adler Digital, Sydney, Australia
Afternoon Tea – Chancellor 2
Work Smarter Not Harder - Chancellor 2
Wayne Campbell
MD, Accounts Online, Wellington
Intelligent Digital Signage – Chancellor 2
Marcus Adler
MD. Adler Digital, Sydney, Australia
Free Night
(Trade Display and Vehicle Wrap Set Up) From 3pm

Friday 16/4
8.30am
9.00am to 3.00pm
9.30am to 4.00pm
10.00am to 11.00am
10.30am to 11.00am
11.00am to 12.00noon
12.30pm to 2.00pm
4.15pm
8.00pm departure
9.00pm until late

Express Breakfast – Chancellor 2
Opening of Trade Displays
Partners Programme Option - Grand Tour of Christchurch City
Vehicle Wrapping Competition - Chancellor 1
LED Forum - Chancellor 2
Morning Tea - Foyer
Training Initiatives - Chancellor 2
CEO, Ian Shepherd, CTITO
Lunch - Chancellor 2
Wrap Winner Announced
Dinner – Own Arrangements
Bus to Mystery Gathering
Mystery Gathering
Compulsory Fancy Dress Theme - Super Heroes!

Saturday 17/4
9.00am to 4.30pm
Saturday day

Trade Display - Open to any sign industry people
Pool Tournament – 11.00am (\$20 per person)
Golf Tournament – 10.00am Tee Off (\$50 per person includes Green Fees and Golf Cart Hire)
Plus other off-site options or free time
NZ Sign & Display Awards
Pre-Dinner drinks in Chancellor 5 among display of entries and trade displays

Sunday 18/4
9.30am

Closing Breakfast, Golf and Pool winners and Farr Cup Award – Chancellor 2

Christchurch
14th to 18th April 2010
Grand Chancellor Hotel

